



# *Double Bayou Watershed Protection Plan*

## *Overview of the Double Bayou WPP Project*

*July 18, 2013*



*Brian Koch, TSSWCB*



**HARC**



# What is a Watershed?

- An area of land that water flows across, through, or under on its way to a stream, river, lake, ocean or other body of water.
- A watershed is like one big bathtub...





# Where Are Watersheds Found?

We find watersheds EVERYWHERE.

ALL land area is part of a watershed.

We ALL live in a watershed.

From  
Texas  
Watershed  
Steward  
Workshop,  
6/25/2013



# *Agency Role*

## **Water Quality Mandate – Texas Agriculture Code 201.026**



Texas State Soil and Water Conservation Board (TSSWCB) is the lead agency in Texas responsible for planning, implementing and managing programs and practices for abating agricultural and silvicultural nonpoint source pollution.

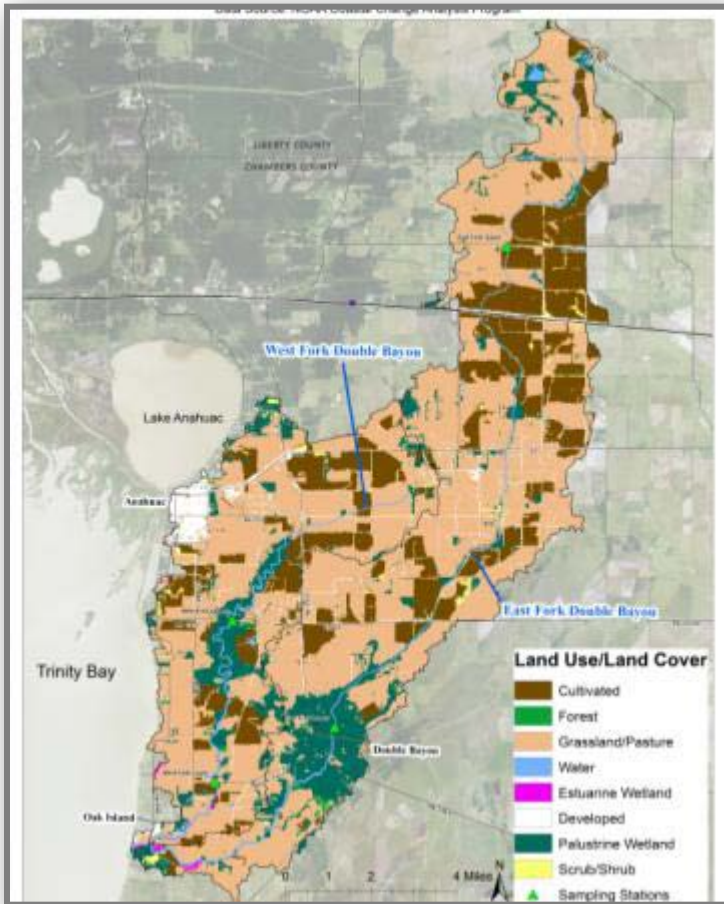


## *How is this done?*



- **The TSSWCB works with the 216 Soil and Water Conservation Districts (SWCDs) in Texas, by using local knowledge to achieve conservation goals that are based on the needs of each specific SWCD.**
- **The TSSWCB provides technical assistance and in some cases financial assistance to the SWCDs to help achieve these goals as well.**

# *Double Bayou WPP Background*



- TCEQ Clean Rivers Program Water Quality Monitoring.
- Double Bayou is listed on the 303(d) list as impaired for bacteria and low DO.
- Because of the impairment, it is required, through the Clean Water Act, that it must be addressed.
- Double Bayou is a predominately a rural watershed with farming and ranching being a majority of the land use.

# *Double Bayou WPP*



- The goal of the WPP is to provide a roadmap to improve the water quality in Double Bayou through a voluntary collaborative approach, using stakeholder ideas written into the plan.
- The WPP process is being facilitated by Stephanie Glenn with HARC and Linda Shead with Shead Conservation Solutions.

# *How is this done?*

- **Voluntary**
- **Community-based**
- **Collaborative**
- **Inclusive**







# Questions?

## **Brian Koch**

*Regional Watershed Coordinator  
Texas State Soil and Water Conservation Board  
1120 Hodges Lane Wharton, TX 77488  
O: 979-532-9496 C: 979-533-8836*



## **Stephanie Glenn, Ph.D.**

*Senior Research Scientist  
Houston Advanced Research Center  
4800 Research Forest Drive  
The Woodlands, TX 77381  
(281)364-6042*



**HARC**

## **Linda R. Shead, P.E.**

*Shead Conservation Solutions  
P.O. Box 70181, Houston, TX 77270-0181  
C: 713-703-1123*



**[www.doublebayou.org](http://www.doublebayou.org)**